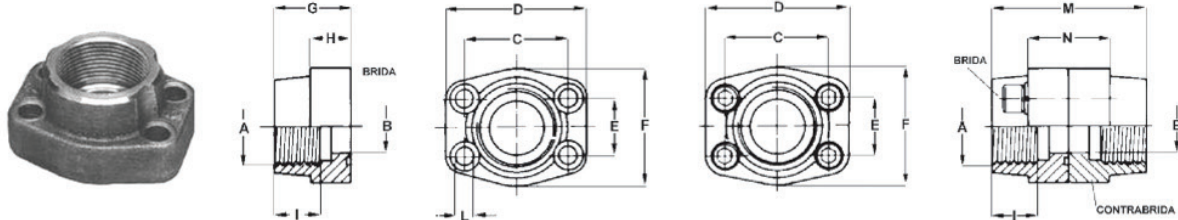


## Flanges SAE simples/duplas roscadas NPT/BSP

Material: Aço forjado. Aço inox sob consulta.



B  
5

Presão máxima Kg/cm <sup>2</sup>	Medida SAE	Tipo	Dimensões (mm)												M (Parafuso)		O-Ring
			A	B	C	D	E	F	G	H	I	L	M	N	Métrica	UNC	
															3000	UNC	
345	1/2"	AFS080N	1/2" NPT	13	38,1	54	17,48	46	36	16	19	9	72	32	M 8x30	5/16x1"1/4	2-210
345	1/2"	AFS080N038	3/8" NPT	13	38,1	54	17,48	46	36	16	19	9	72	32	M 8x30	5/16x1"1/4	2-210
345	3/4"	AFS100N	3/4" NPT	19	47,63	65	22,23	50	36	18	19	11	72	36	M 10x35	3/8x1"1/2	2-214
345	3/4"	AFS100N012	1/2" NPT	13	47,63	65	22,23	50	36	18	19	11	72	36	M 10x35	3/8x1"1/2	2-214
345	1"	AFS102N	1" NPT	25	52,37	70	26,19	55	38	18	22	11	76	36	M 10x35	3/8x1"1/2	2-219
345	1"	AFS102N034	3/4" NPT	19	52,37	70	26,19	55	35	21	19	11	70	42	M 10x35	3/8x1"1/2	2-219
276	1 1/4"	AFS104N	1 1/4" NPT	32	58,72	79	30,18	68	41	21	22	11,5	82	42	M 10x40	7/16x1"3/4	2-222
276	1 1/4"	AFS104N100	1" NPT	25	58,72	81	30,18	65	42	25	22	11,5	84	50	M 10x40	7/16x1"3/4	2-222
207	1 1/2"	AFS106N	1 1/2" NPT	38	69,85	93	35,71	78	45	25	24	13,5	90	50	M 12x45	1/2x1"3/4	2-225
207	1 1/2"	AFS106N114	1 1/4" NPT	32	69,85	95	35,71	78	45	27	24	13,5	90	54	M 12x45	1/2x1"3/4	2-225
207	2"	AFS108N	2" NPT	51	77,77	102	42,88	90	45	25	30	13,5	90	50	M 12x45	1/2x1"3/4	2-228
207	2"	AFS108N112	1 1/2" NPT	38	77,77	102	42,88	90	45	25	26	13,5	90	50	M 12x45	1/2x1"3/4	2-228
172	2 1/2"	AFS110N	2 1/2" NPT	63	88,9	114	50,80	105	50	25	30	13,5	100	50	M 12x45	1/2x1"3/4	2-232
138	3"	AFS112N	3" NPT	73	106,38	134	61,93	124	50	27	34	17,5	100	54	M 16x50	5/8x2"	2-237
34	3 1/2"	AFS114N	3 1/2" NPT	89	120,65	152	69,85	136	48	27	34	17,5	96	54	M 16x50	5/8x2"	2-241
34	4"	AFS116N	4" NPT	99	130,18	162	77,77	146	48	27	34	17,5	96	54	M 16x50	5/8x2"	2-245
34	5"	AFS118N	5" NPT	120	152,40	184	92,08	180	50	28	30	17,5	100	56	M 16x50	5/8x2"	2-537
			<b>6000</b>														
414	1/2"	AFS401N012	1/2" NPT	13	40,49	54	18,24	46	36	16	19	9	72	32	M 8x30	5/16x1"1/4	2-210
414	1/2"	AFS401N0138	3/8" NPT	13	40,49	54	18,24	46	36	16	19	9	72	32	M 8x30	5/16x1"1/4	2-210
414	3/4"	AFS402N	3/4" NPT	19	50,8	71	23,8	55	35	21	22	11	70	42	M 10x35	3/8x1"1/2	2-214
414	3/4"	AFS402N012	1/2" NPT	13	50,8	71	23,8	55	35	21	22	11	70	42	M 10x35	3/8x1"1/2	2-214
414	1"	AFS403N	1" NPT	25	57,15	81	27,76	65	42	25	24	13	84	50	M 12x45	7/16x1"3/4	2-219
414	1"	AFS403N034	3/4" NPT	19	57,15	81	27,76	65	42	25	24	13	84	50	M 12x45	7/16x1"3/4	2-219
414	1 1/4"	AFS404N	1 1/4" NPT	32	66,68	95	31,75	78	45	27	25	15	90	54	M 14x45	1/2x1"3/4	2-222
414	1 1/4"	AFS404N100	1" NPT	25	66,68	95	31,75	78	45	27	25	15	90	54	M 14x45	1/2x1"3/4	2-222
414	1 1/2"	AFS405N	1 1/2" NPT	38	79,38	112	36,5	94	50	30	28	17	100	60	M 16x50	5/8x2"	2-225
414	1 1/2"	AFS405N114	1 1/4" NPT	32	79,38	112	36,5	94	50	30	28	17	100	60	M 16x50	5/8x2"	2-225
414	2"	AFS406N	2" NPT	51	96,82	134	44,45	114	65	37	30	21	130	74	M 20x70	3/4x2"1/2	2-228
414	2"	AFS406N112	1 1/2" NPT	38	96,82	134	44,45	114	65	37	30	21	130	74	M 20x70	3/4x2"1/2	2-228
414	2 1/2"	AFS507N *	2 1/2" NPT	63	123,8	180	58,7	152	80	45	35	26	160	90	M 24	7/8	2-275
414	3"	AFS508N *	3" NPT	73	152,4	208	71,4	178	90	55	40	33	180	110	M 30	1 1/8	2-337

### Solicite pelo código

Flange Simples NPT.....	<b>AFS...N</b>	Flange dupla NPT com parafusos Métricos, arruelas e O-Ring.....	<b>DFS...NM</b>
Contra-Flange Simples NPT.....	<b>GFS...N</b>	Flange dupla BSP com parafusos Métricos, arruelas e O-Ring.....	<b>DFS...GM</b>
Flange Simples BSP.....	<b>AFS...G</b>		
Contra-Flange Simples BSP.....	<b>GFS...G</b>		