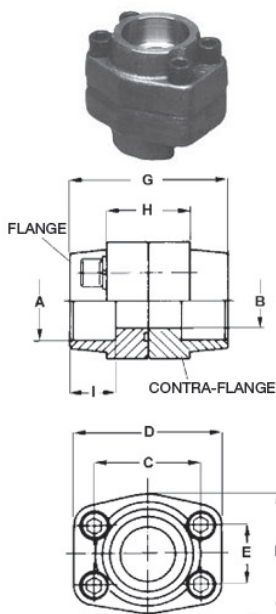


Flanges SAE simples / duplos para soldar "WELD-IN"

B
6



Material: Aço forjado
Aço inox, sob consulta.

Pressão Máxima Kg/cm ²	Medida SAE	Tipo	Dimensões (mm)											O-Ring	Peso (Kg)		
			A	B	C	D	E	F	G	H	I	M (Parafusos)					
												Métrica	UNC				
3000																	
345	1/2"	DFS80S	21,60	13	38,10	54	17,48	46	72	32	19	M 8x30	5/16x1"1/4	2-210	0,55		
345	1/2"	DFS80S03B	17,50	13	38,10	54	17,48	46	72	32	19	M 8x30	5/16x1"1/4	2-210	0,51		
345	3/4"	DFS100S	27,20	19	47,63	65	22,23	50	72	36	19	M 10x35	3/8x1"1/2	2-214	0,86		
345	1"	DFS102S	34,00	25	52,37	70	26,19	55	76	36	19	M 10x35	3/8x1"1/2	2-219	0,98		
276	1 1/4"	DFS104S	42,80	32	58,72	79	30,18	68	82	42	22	M 10x40	7/16x1"3/4	2-222	1,47		
207	1 1/2"	DFS106S	48,60	38	69,85	93	35,71	78	90	50	24	M 12x45	1/2x1"3/4	2-225	2,23		
207	2"	DFS108S	61	51	77,77	102	42,88	90	90	50	26	M 12x45	1/2x1"3/4	2-228	2,56		
172	2 1/2"	DFS110S	76,6	63	88,9	114	50,8	105	100	50	30	M 12x45	1/2x1"3/4	2-232	3,38		
138	3"	DFS112S	90,5	73	106,38	134	61,93	124	100	54	34	M 16x50	5/8x2"	2-237	5,18		
34	3 1/2"	DFS114S	103	89	120,65	152	69,85	136	96	54	34	M 16x50	5/8x2"	2-241	5,23		
34	4"	DFS116S	115,5	99	130,18	162	77,77	146	96	54	34	M 16x50	5/8x2"	2-245	6,22		
34	5"	DFS118S	140,2	120	152,4	184	92,08	180	100	56	30	M 16x50	5/8x2"	2-537	12,12		
6000																	
414	1/2"	DFS401S012	21,6	13	40,49	57	18,24	46	72	32	19	M 8x30	5/16x1"1/4	2-210	0,55		
414	1/2"	DFS401S03B	17,5	13	40,49	57	18,24	46	72	32	19	M 8x30	5/16x1"1/4	2-210	0,51		
414	3/4"	DFS402S	28	19	50,8	71	23,8	55	70	42	22	M 10x35	3/8x1"1/2	2-214	1,13		
414	1"	DFS403S	34	25	57,15	79	27,76	68	82	42	22	M 12x45	7/16x1"3/4	2-219	1,54		
414	1 1/4"	DFS404S	42,8	32	66,68	93	31,75	78	88	50	25	M 14x45	1/2x1"3/4	2-222	2,37		
414	1 1/2"	DFS405S	48,6	38	79,38	112	36,5	94	110	60	28	M 16x50	5/8x2"	2-225	3,37		
414	2"	DFS406S	61	51	96,82	134	44,45	114	130	74	24	M 20x70	3/4x2"1/2	2-228	6,75		
414	2 1/2"	DFS507S*	76,6	63	123,8	180	58,7	152	160	90	35	M 24	7/8	2-275	15,30		
414	3"	DFS508S*	90	73	152,4	208	71,4	178	180	110	40	M 30	1" 1/8	2-337	25,55		

Solicite pelo código

Flange simples NPT..... **AFS.../90 N**
Flange simples BSP..... **AFS.../90 G**

Flange com parafuso métrico, arruela e O-Ring..... **AFS.../90...M**
Flange com parafuso UNC, arruelas e O-Ring..... **AFS.../90...U**