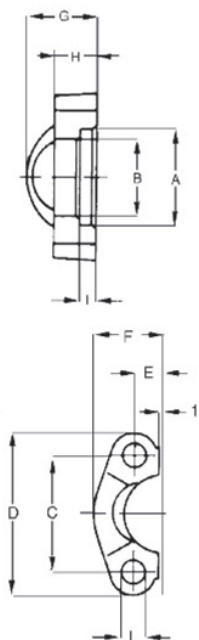


Flange bipartido SAE

Material: Aço forjado, zincado.
Aço inox, sob consulta.



| Pressão Máxima BAR | Medida SAE | Tipo | Dimensões (mm) | | | | | | | | | | M (Parafuso) | | Peso (Kg) | |
|--------------------|------------|---------|----------------|--------|--------|-----|-------|------|----|----|-------|-------|--------------|-------------|-----------|-----|
| | | | 3000 | A | B | C | D | E | F | G | H | I | L | M | | |
| | | | | | | | | | | | | | | Métrica | | UNC |
| 345 | 1/2" | AFS301B | 30,96 | 24,26 | 38,1 | 54 | 8,74 | 22,8 | 19 | 13 | 6,22 | 8,75 | M 8x30 | 5/16"x1"1/4 | 0,12 | |
| 345 | 3/4" | AFS302B | 38,89 | 32,13 | 47,63 | 65 | 11,13 | 25,9 | 22 | 14 | 6,22 | 10,75 | M 10x35 | 3/8"x1"1/2 | 0,16 | |
| 345 | 1" | AFS303B | 45,24 | 38,48 | 52,37 | 70 | 13,08 | 29,2 | 24 | 16 | 7,49 | 10,75 | M 10x35 | 3/8"x1"1/2 | 0,22 | |
| 276 | 1 1/4" | AFS304B | 51,59 | 43,69 | 58,72 | 79 | 15,09 | 36,3 | 22 | 14 | 7,49 | 12 | M 10x35 | 7/16"x1"3/4 | 0,3 | |
| 207 | 1 1/2" | AFS305B | 61,09 | 50,8 | 69,85 | 94 | 17,86 | 41,1 | 25 | 16 | 7,49 | 13,5 | M 12x35 | 1/2"x1"3/4 | 0,43 | |
| 207 | 2" | AFS306B | 72,24 | 62,74 | 77,77 | 102 | 21,44 | 48,2 | 26 | 16 | 9,02 | 13,5 | M 12x35 | 1/2"x1"3/4 | 0,56 | |
| 172 | 2 1/2" | AFS307B | 84,94 | 74,93 | 88,9 | 114 | 25,4 | 54,1 | 38 | 19 | 9,02 | 13,5 | M 12x40 | 1/2"x1"3/4 | 0,74 | |
| 138 | 3" | AFS308B | 102,39 | 90,93 | 106,38 | 135 | 30,96 | 65,3 | 41 | 22 | 9,02 | 16,75 | M 16x50 | 8/8" | 1,3 | |
| 34 | 3 1/2" | AFS309B | 115,1 | 102,36 | 120,65 | 152 | 34,92 | 69,5 | 28 | 22 | 10,72 | 17 | M 16x50 | 5/8"x2" | 1,27 | |
| 34 | 4" | AFS310B | 127,79 | 115,06 | 130,18 | 162 | 38,88 | 76 | 35 | 25 | 10,72 | 17 | M 16x50 | 5/8"x2" | 1,65 | |
| 34 | 5" | AFS311B | 153,19 | 140,46 | 152,4 | 184 | 46,04 | 90 | 41 | 28 | 10,72 | 17 | M 16x55 | 5/8"x2"1/4 | 2,5 | |
| | | 6000 | | | | | | | | | | | | | | |
| 420 | 1/2" | AFS601B | 32,54 | 24,64 | 40,49 | 56 | 9,12 | 23,6 | 22 | 16 | 7,24 | 8,75 | M 8x30 | 5/16"x1"1/4 | 0,16 | |
| 420 | 3/4" | AFS602B | 42,06 | 32,51 | 50,8 | 71 | 11,91 | 30 | 28 | 19 | 8,26 | 11 | M 10x35 | 3/8"x1"1/2 | 0,34 | |
| 420 | 1" | AFS603B | 48,41 | 38,86 | 57,15 | 81 | 13,89 | 34,8 | 33 | 24 | 9,02 | 13 | M 12x45 | - | 0,51 | |
| 420 | 1 1/4" | AFS604B | 54,76 | 44,45 | 66,68 | 95 | 15,88 | 38,6 | 38 | 27 | 9,78 | 15 | M 14x45 | - | 0,8 | |
| 420 | 1 1/2" | AFS605B | 64,29 | 51,56 | 79,38 | 113 | 18,26 | 47,5 | 43 | 30 | 12,07 | 17 | M 16x55 | 5/8"x2"1/4 | 1,44 | |
| 420 | 2" | AFS606B | 80,16 | 67,56 | 96,82 | 133 | 22,23 | 56,9 | 52 | 37 | 12,07 | 21 | M 20x70 | 3/4"x2"3/4 | 2,1 | |

B

8